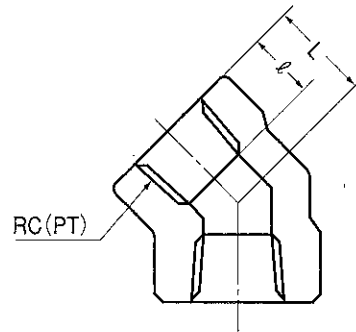
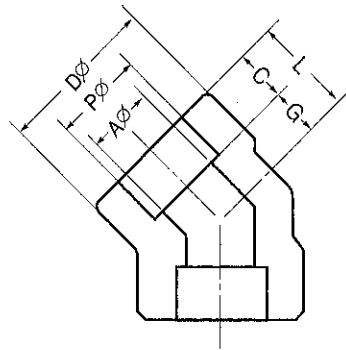


SOCKET WELDING TYPE

SCREW END TYPE



さし込み形 SW45° E

ねじ込み形 PT45° E

単位mm

呼 称			記 号	P	D	C	A	L	φ	G
8	1/4	S 80	14.3	23	10	9.4	17.9	13	7.9	
10	3/8	S 80	17.8	27	11	12.7	18.9	14	7.9	
15	1/2	S 80	22.2	33	13	16.1	24.1	15	11.1	
20	3/4	S 80	27.7	38	14	21.4	26.7	17	12.7	
25	1	S 80	34.5	47	16	27.2	30.3	21	14.3	
32	1 1/4	S 80	43.2	56	18	35.5	35.5	24	17.5	
40	1 1/2	S 80	49.1	63	19	41.2	39.6	25	20.6	
50	2	S 80	61.1	76	22	52.7	47.4	30	25.4	
65	2 1/2	S 80	77.1	96	26	65.9	54.6	33	28.6	
80	3	S 80	90.0	110	29	78.1	60.8	38	31.8	
100	4	S 80	115.5	138	35	102.3	80.0	40	45.0	
125	5	S 80	141.2	170□	25	126.6	SW 60.0		35.0	
150	6	S 80	166.9	210□	25	151.0	SW 65.0		40.0	
15	1/2	S 160	22.2	38	14	12.3	26.7		12.7	
20	3/4	S 160	27.7	47	16	16.2	30.3		14.3	
25	1	S 160	34.5	56	18	21.2	35.5		17.5	
32	1 1/4	S 160	43.2	63	19	29.9	39.6		20.6	
40	1 1/2	S 160	49.1	76	22	34.4	47.4		25.4	
50	2	S 160	61.1	96	26	43.1	54.6		28.6	
65	2 1/2	S 160	77.1	110	29	57.3	60.8		31.8	
80	3	S 160	90.0	120	31	66.9	64.0		34.9	
100	4	S 160	115.5	146 (153)	39	87.3	80.0		41.0	