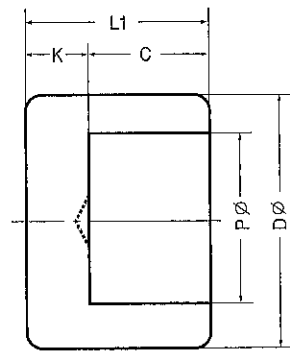
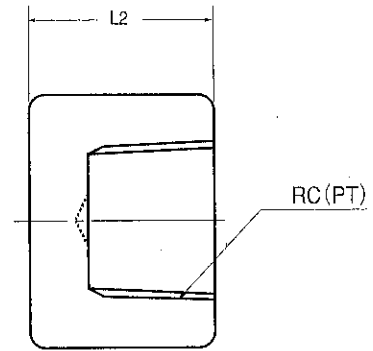


## SOCKET WELDING TYPE



さし込み形 SW cap

## SCREW END TYPE



ねじ込み形 PT cap

※(S/80)

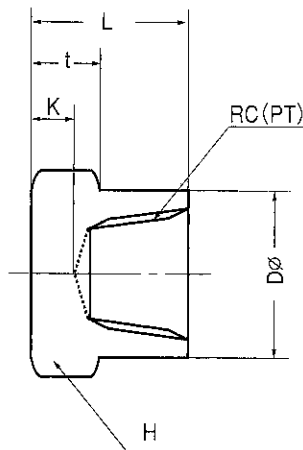
単位mm

記号		P	D	C	K	L1	L2
呼称							
8	1/4	14.3	22.0	10.0	4.1	16.0	20.0
10	3/8	17.8	26.0	10.0	5.0	17.0	22.0
15	1/2	22.2	32.0	10.0	6.1	18.0	26.0
20	3/4	27.7	38.0	13.0	7.0	22.0	28.0
25	1	34.5	45.0	13.0	8.3	23.0	32.0
32	1 1/4	43.2	55.0	13.0	9.6	24.0	36.0
40	1 1/2	49.1	63.5	13.0	10.5	25.0	38.0
50	2	61.1	75.0	16.0	12.2	30.0	45.0
65	2 1/2	77.1	95.0	18.0	15.3	36.0	52.0
80	3	90.0	110.0	18.0	17.3	38.0	58.0
100	4	115.5	140	30.0	25.0	55.0	65.0

## SCREW END TYPE

※(S/80)

単位mm



ねじ込み形 PT 6 cap

記号		K	L	D	H	t
呼称						
8	1/4	6	19	20	21	9
10	3/8	7	22	25	26	10
15	1/2	8	25	31	32	11
20	3/4	8	28	37	38	13
25	1	11	33	45	46	17
32	1 1/4	11	36	54	55	17
40	1 1/2	13	40	62	63	20
50	2	14	44	76	77	20