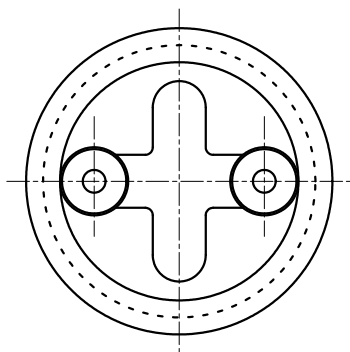
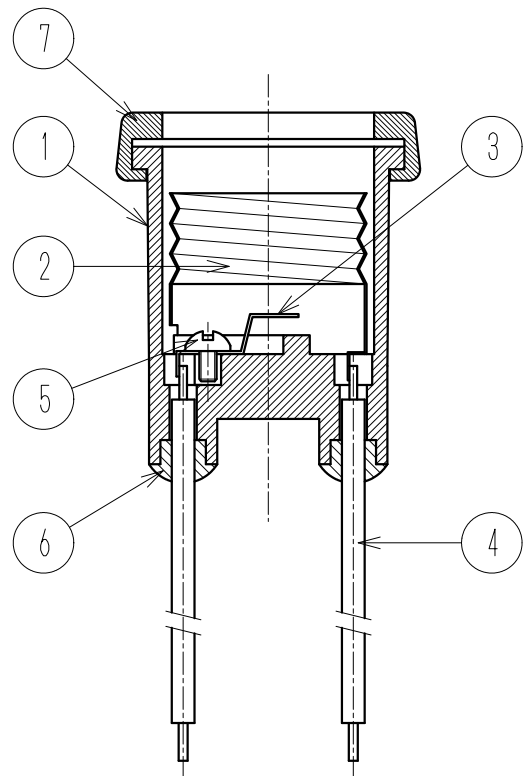
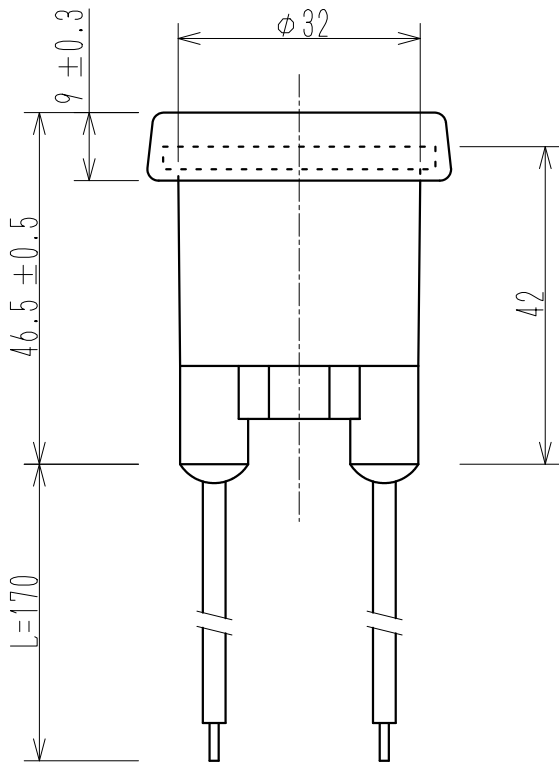


Technical drawing of a circular flange. The outer diameter is specified as $\phi 40.5 \pm 0.5$. The inner diameter of the central slot is $\phi 36$. The flange features a central slot with a semi-circular end. Four screws are shown: two in the upper half and two in the lower half, positioned symmetrically about the horizontal centerline. The drawing includes concentric circles representing the flange's profile and a dashed circle indicating the inner hole.



型名	TS-364-E26
定格	6A 300V
適合口金	E26

變更 Revisions	回数 Rev mark	
	年月日 Date	
	承認 Approved by	
	變更者 Revised by	



NTS

m/m

検図 Checked by
M. SUEKUNI
2021. 05. 27

製図 Drawn by
S. TSUJI
2021. 02. 16

E26ベーク防滴ソケット
TS-364-E26 仕様図

TZA-21-079

TOZAI DENSAN LTD.